

UN 38.3

# 检测报告

## Test Report

新申请

New Application

变更

Modification

其他:

Other:

报告编号: 20220706J19994

Report ID

样品名称: 锂电池电池组

Sample Name Lithium-ion Battery

型号规格: iBAT-R-5.12L

Model/Type

51.2V 100Ah 5.12kWh

委托单位: 弘正储能(上海)能源科技有限公司

Applicant

Shanghai Hoenergy Power Technology Co., LTD



中认英泰检测技术有限公司

CQC Intime Testing Technology Co.,Ltd.

<b>检测报告</b> <b>TEST REPORT</b>			
报告编号: Report ID	20220706J19994		
样品名称: Sample Name	锂电池电池组 Lithium-ion Battery	商 标 : Trade Mark	
型号规格: Model/Type	iBAT-R-5.12L 51.2V 100Ah 5.12kWh	样品状态: Sample status	完好 Good
委托单位: Applicant	弘正储能（上海）能源科技有限公司 Shanghai Hoenergy Power Technology Co., LTD		
地址: Applicant Address	上海市奉贤区望园路1888弄1幢 Building 1, 1888 Wangyuan Road, Fengxian District, Shanghai, P.R.China		
生产单位: Manufacturer	弘正储能（上海）能源科技有限公司 Shanghai Hoenergy Power Technology Co., LTD		
地址: Manufacturer Address	上海市奉贤区望园路1888弄1幢 Building 1, 1888 Wangyuan Road, Fengxian District, Shanghai, P.R.China		
试验单位: Test Lab	中认英泰检测技术有限公司 CQC Intime Testing Technology Co., Ltd		
地址: Lab Address	苏州吴中经济开发区吴中大道 1368号东太湖科技金融城 East Taihu Technology and Finance City, No.1368 Wuzhong Dadao Rd., Wuzhong Economic Development Zone, Suzhou, Jiangsu.		
试验标准: Standard Specification	《关于危险货物运输的建议书 试验和标准手册》第七版修订1第38.3节 Recommendations on the Transport of Dangerous Goods, Manual of Tests and Criteria, ST/SG/AC.10/11/Rev.7/Amend.1/Section 38.3		
试验项目: Test Item	高度模拟; 温度试验; 振动; 冲击; 外部短路; 挤压; 过度充电; 强制放电 Altitude Simulation, Thermal Test, Vibration, Shock, External Short Circuit, Crush, Overcharge, Force Discharge		
接样日期: 2022-07-21 Receiving Date	完成时间: 2022-09-03 Completing Date		
试验结论 : Conclusion	所检样品符合上述标准要求 The Submitted Sample(s) Meet the Requirement of the Standard.		
检测环境: Test Condition	环境温度: 20°C ± 5°C Ambient temperature		
项目: Engineer	王利通	CQCIT印章 Seal of CQCIT  签发日期: Data of issue 2022-09-03	
审核: Auditor	侯逢文		
签发: Approver	赵润生		

试验样品描述 Description of the sample		
测试项目 Test Item	样品编号 Sample No.	样品状态 Sample State
T1~T5	B1~ B2	第1个充放电循环，完全充电状态 At first cycle, in fully charged states
	B3~ B4	第25个充放电循环后，完全充电状态 After 25 cycles ending in fully charged states
T6	C1~ C5	第1个充放电循环，50%设计额定容量状态 At first cycle at 50% of the design rated capacity
	C6~ C10	第25个充放电循环后，50%设计额定容量状态 After 25 cycles ending at 50% of the design rated capacity
T7	B5~ B6	第1个充放电循环，完全充电状态 At first cycle, in fully charged states
	B7~ B8	第25个充放电循环后，完全充电状态 After 25 cycles ending in fully charged states
T8	C11~ C20	第1个充放电循环，完全放电状态 At first cycle, in fully discharged states
	C21~ C30	第25个充放电循环后，完全放电状态 After 25 cycles ending in fully discharged states
备注 Remarks		
1, 该样品为大型电池组 This sample is large battery		

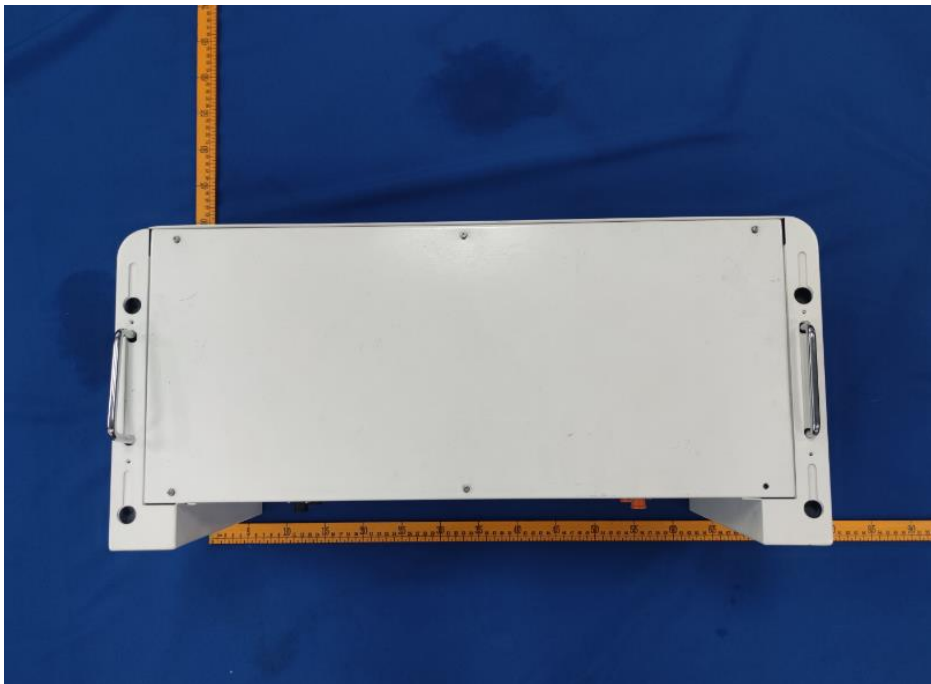
样品基本信息 Sample Fundamental Parameters			
项目 Item	参数 Parameters	项目 Item	参数 Parameters
额定容量(Ah) Rated capacity(Ah)	100	标称电压(V) Nominal voltage(V)	51.2
额定瓦特一小时(Wh) Watt-hour rating(Wh)	5120	充电限制电压(V) Limited charge voltage(V)	57.6
充电电流(A) Charge current(A)	100	最大连续充电电流(A) Maximum continous charging current (A)	50
充电截止电流(A) End charge current(A)	5	放电电流(A) Discharge current(A)	50
放电终止电压(V) End of discharging voltage (V)	42.4	内含电池芯个数(个) Cell numbers(pcs)	16
最大放电电流 (A) Maximum discharge current(A)	50	电池芯型号 Model of cell	CB56
电池芯容量(Ah) Capacity of cell(Ah)	100	电池芯排列方式 Permutation of cell	1P16S
电池芯形状 Shape of cell	<input type="checkbox"/> 圆柱形 $\Phi \geq 18\text{mm}$ <input type="checkbox"/> 圆柱形 $< 18\text{mm}$ Cylindrical $\Phi \geq 18\text{mm}$ Cylindrical $\Phi < 18\text{mm}$  <input checked="" type="checkbox"/> 棱柱形 <input type="checkbox"/> 袋装电池 <input type="checkbox"/> 纽扣电池 Prismatic    Pouch Cell    Button Cell		

样品照片  
Photos of Sample

样品图片 (Sample photograph) -1



样品图片 (Sample photograph) -2

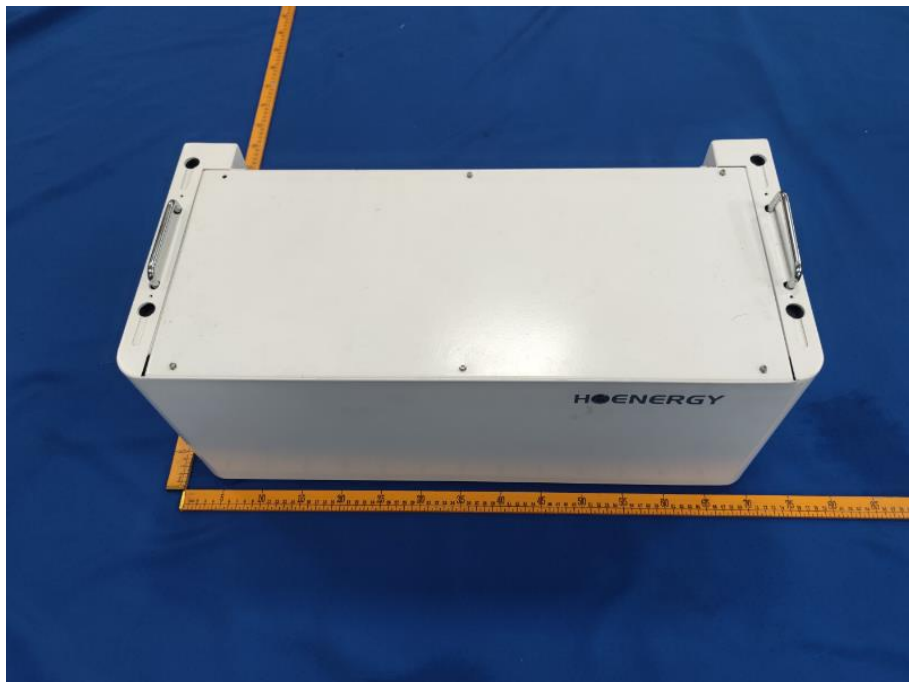


样品照片  
Photos of Sample

样品图片 (Sample photograph) -3



样品图片 (Sample photograph) -4



样品照片  
Photos of Sample

样品图片 (Sample photograph) -5



样品图片 (Sample photograph) -6



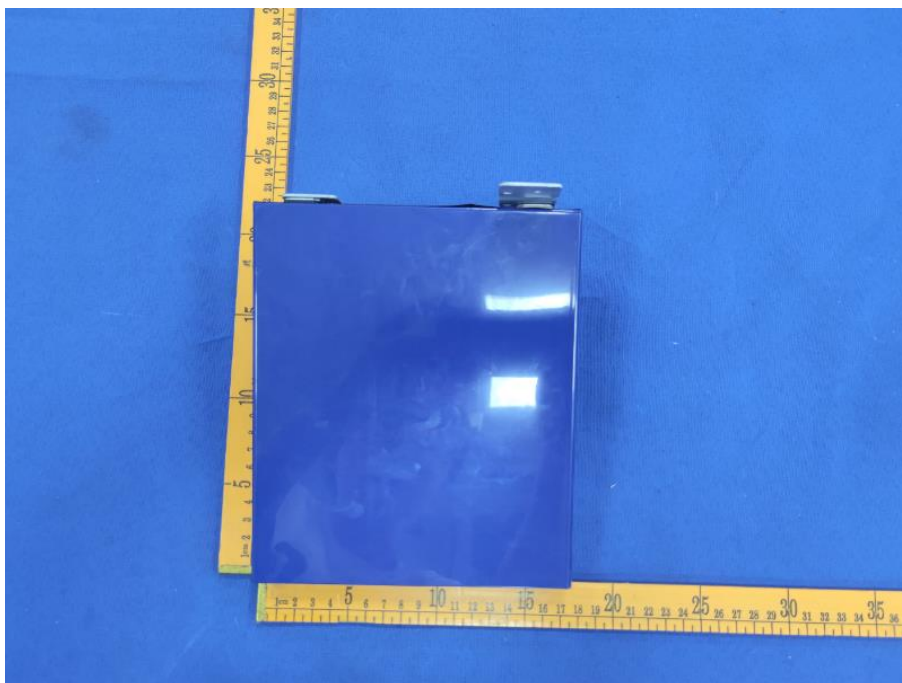


样品照片  
Photos of Sample

样品图片 (Sample photograph) -7



样品图片 (Sample photograph) -8





中认英泰检测技术有限公司  
CQC Intime Testing Technology Co.,Ltd  
检测报告  
Test Report

检测结果  
Test results

条款 Clause	<b>38.3.4.1高度模拟试验</b> <b>38.3.4.1 Altitude simulation</b>
测试步骤 Test Procedure	试验电池和电池组应在压力等于或低于11.6千帕和环境温度(20 ± 5°C)下存放至少6小时。 Test cells and batteries shall be stored at a pressure of 11.6 kPa or less for at least six hours at ambient temperature(20±5°C).
技术要求 Test requirement	不漏液、不泄放、不解体、不破裂、不着火(测试完电池的开路电压不小于测试前电压的90%，质量损失限值0.1%) No leakage, no venting, no disassembly, no rupture and no fire. The open circuit voltage of each test cell or battery after testing is not less than 90% of its voltage immediately prior to this procedure. Mass loss limit 0.1%.
检测结果 Test results	不漏液、不泄放、不解体、不破裂、不着火，具体数据详见附表1 No leakage, no venting, no disassembly, no rupture and no fire. Test data is shown in Annex 1.
结论 Pass/Fail Conclusion	P

中认英泰检测技术有限公司  
CQC Intime Testing Technology Co.,Ltd  
检测报告  
Test Report

检测结果  
Test results

条款 Clause	<b>38.3.4.2温度试验</b> <b>38.3.4.2 Thermal test</b>
测试步骤 Test Procedure	<p>试验电池和电池组应先在试验温度等于<math>72 \pm 2^{\circ}\text{C}</math>的条件下存放至少6小时，接着再在试验温度等于<math>-40 \pm 2^{\circ}\text{C}</math>的条件下存放至少6小时。两个极端试验温度之间的最大时间间隔为30分钟。此程序重复进行，共完成10次，接着将所有试验电池和电池组在环境温度(<math>20 \pm 5^{\circ}\text{C}</math>)下存放24小时。</p> <p>对于大型电池和电池组，暴露于极端试验温度的时间至少应为12小时。</p> <p>Test cells and batteries are to be stored for at least six hours at a test temperature equal to <math>72 \pm 2^{\circ}\text{C}</math>, followed by storage for at least six hours at a test temperature equal to <math>-40 \pm 2^{\circ}\text{C}</math>. The maximum time interval between test temperature extremes is 30 minutes. This procedure is to be repeated until 10 total cycles are complete, after which all test cells and batteries are to be stored for 24 hours at ambient temperature (<math>20 \pm 5^{\circ}\text{C}</math>).</p> <p>For large cells and batteries the duration of exposure to the test temperature extremes should be at least 12 hours.</p>
技术要求 Test requirement	<p>不漏液、不泄放、不解体、不破裂、不着火(测试完电池的开路电压不小于测试前电压的90%，质量损失限值0.1%)</p> <p>No leakage, no venting, no disassembly, no rupture and no fire. The open circuit voltage of each test cell or battery after testing is not less than 90% of its voltage immediately prior to this procedure. Mass loss limit 0.1%.</p>
检测结果 Test results	<p>不漏液、不泄放、不解体、不破裂、不着火，具体数据详见附表2</p> <p>No leakage, no venting, no disassembly, no rupture and no fire. Test data is shown in Annex 2.</p>
结论 Pass/Fail Conclusion	P

中认英泰检测技术有限公司  
CQC Intime Testing Technology Co.,Ltd  
检测报告  
Test Report

检测结果  
Test results

条款 Clause	<b>38.3.4.3 振动试验</b> <b>38.3.4.3 Vibration</b>
测试步骤 Test Procedure	<p>电池和电池组紧固于振动机平台，但紧固程度不能造成电池变形以致不能准确传递振动。振动应是正弦波形，对数频率扫描从7Hz到200Hz，再回到7Hz，跨度为15分钟。</p> <p>对电池和小型电池组：从7 Hz开始，保持1gn 的最大加速度，直到频率达到18 Hz。然后将振幅保持在0.8 毫米(总偏移1.6 毫米)，并增加频率直到最大加速度达到8 gn (频率约为50 Hz)。将最大加速度保持在8 gn 直到频率增加到200 Hz。</p> <p>对大型电池组：从7Hz开始，保持1 gn 的最大加速度，直到频率达到18Hz。然后将振幅保持在0.8 毫米(总偏移1.6 毫米)，并增加频率直到最大加速度达到2 gn (频率约为25 Hz)。将最大加速度保持在2 gn 直到频率增加到200Hz。</p> <p>这一振动过程须对三个互相垂直的电池安装方位的每一方向重复进行12次，总共为时3小时。其中一个振动方向必须与端面垂直。</p> <p>Cells and batteries are firmly secured to the platform of the vibration machine without distorting the cells in such a manner as to faithfully transmit the vibration. The vibration shall be a sinusoidal waveform with a logarithmic sweep between 7 Hz and 200 Hz and back to 7 Hz traversed in 15 minutes.</p> <p>For cells and small batteries: from 7 Hz a peak acceleration of 1 gn is maintained until 18Hz is reached. The amplitude is then maintained at 0.8 mm(1.6 mm total excursion ) and the frequency Increased until a peak acceleration of 8 gn occurs (approximately 50 Hz). A peak acceleration of 8 gn is then maintained until the frequency is Increased to 200 Hz</p> <p>For large batteries: from 7Hz to a peak acceleration of 1 gn is maintained until 18 Hz is reached. The amplitude is then maintained at 0.8 mm(1.6 mm total excursion) and the frequency increased until a peak acceleration of 2 gn (approximately 25 Hz). A peak acceleration of 2 gn is then maintained until the frequency is increased to 200Hz</p> <p>This cycle shall be repeated 12 times for a total of 3 hours for each of three mutually perpendicular mounting positions of the cell. One of the directions of vibration must be perpendicular to the terminal face.</p>
技术要求 Test requirement	<p>不漏液、不泄放、不解体、不破裂、不着火(测试完电池的开路电压不小于测试前电压的90%，质量损失限值0.1%)</p> <p>No leakage, no venting, no disassembly, no rupture and no fire. The open circuit voltage of each test cell or battery after testing is not less than 90% of its voltage immediately prior to this procedure. Mass loss limit 0.1%.</p>
检测结果 Test results	<p>不漏液、不泄放、不解体、不破裂、不着火，具体数据详见附表3</p> <p>No leakage, no venting, no disassembly, no rupture and no fire. Test data is shown in Annex 3.</p>
结论 Pass/Fail Conclusion	P

# 中认英泰检测技术有限公司

## CQC Intime Testing Technology Co.,Ltd

### 检测报告

### Test Report

检测结果  
Test results

条款 Clause	<p><b>38.3.4.4 冲击试验</b> <b>38.3.4.4 Shock</b></p>
测试步骤 Test Procedure	<p>试验电池和电池组用坚固支架紧固在试验机上，支架支撑着每个试验电池组的所有安装面。</p> <p>每个电池须经受最大加速度150 gn 和脉冲持续时间6 毫秒的半正弦波冲击。大型电池须经受最大加速度50 gn 和脉冲持续时间11 毫秒的半正弦波冲击。</p> <p>小型电池组以峰值为 150gn（或与 <math>\sqrt{\left(\frac{100850}{\text{mass}}\right)}</math> 中的较小值）的半正弦的加速度撞击，脉冲持续 6 毫秒，大型电池组须经受最大加速度 50gn（或与 <math>\sqrt{\left(\frac{30000}{\text{mass}}\right)}</math> 中的较小值）和脉冲持续时间 11 毫秒的半正弦波冲击。</p> <p>每个电池或电池组须在三个互相垂直的电池安装方位的正方向经受三次冲击，接着在反方向经受三次冲击，总共经受 18 次冲击。</p> <p>Test cells and batteries shall be secured to the testing machine by means of a rigid mount which will support all mounting surfaces of each test battery.</p> <p>Each cell shall be subjected to a half-sine shock of peak acceleration of 150 gn and pulse duration of 6 milliseconds. Alternatively, large cells may be subjected to a half-sine shock acceleration of 50 gn and pulse duration of 11 milliseconds.</p> <p>Small batteries shall be subjected to a half-sine shock of peak acceleration of 150 gn (or Acceleration(gn)= <math>\sqrt{\left(\frac{100850}{\text{mass}}\right)}</math>, which is smaller) and pulse duration of 6 milliseconds. Large batteries shall be subjected to a half-sine of peak acceleration of 50 gn (or Acceleration(gn)= <math>\sqrt{\left(\frac{30000}{\text{mass}}\right)}</math>, which is smaller) and pulse duration of 11 milliseconds.</p> <p>Each battery shall be subjected to three shocks in the positive direction followed by three shocks in the negative direction of three mutually perpendicular mounting positions of the battery for a total of 18 shocks.</p>
技术要求 Test requirement	<p>不漏液、不泄放、不解体、不破裂、不着火(测试完电池的开路电压不小于测试前电压的90%，质量损失限值0.1%)</p> <p>No leakage, no venting, no disassembly, no rupture and no fire. The open circuit voltage of each test cell or battery after testing is not less than 90% of its voltage immediately prior to this procedure. Mass loss limit 0.1%.</p>
检测结果 Test results	<p>不漏液、不泄放、不解体、不破裂、不着火，具体数据详见附表4</p> <p>No leakage, no venting, no disassembly, no rupture and no fire. Test data is shown in Annex 4.</p>
结论 Pass/Fail Conclusion	<p>P</p>

中认英泰检测技术有限公司  
CQC Intime Testing Technology Co.,Ltd  
检测报告  
Test Report

检测结果  
Test results

条款 Clause	<b>38.3.4.5 外部短路</b> <b>38.3.4.5 External short circuit</b>
测试步骤 Test Procedure	<p>电池和电池组的外壳温度稳定在<math>57\pm 4^{\circ}\text{C}</math>后，在此温度下对电池进行外部短路，外电路的总阻值应小于<math>0.1\Omega</math>，持续短路至样品外壳温度回落到<math>57\pm 4^{\circ}\text{C}</math>后至少再继续短路1 h；对于大型电池组，外壳温度降幅达试验中所观察到的最高温升幅的二分之一并保持低于该数值。电池组必须再观察6h结束试验。</p> <p>The cell or battery to be tested shall be temperature stabilized so that its external case temperature reaches <math>57\pm 4^{\circ}\text{C}</math> and then the cell or battery shall be subjected to a short circuit condition with a total external resistance of less than <math>0.1\ \text{ohm}</math> at <math>57\pm 4^{\circ}\text{C}</math>. This short circuit condition is continued for at least one hour after the cell or battery external case temperature has returned to <math>57\pm 4^{\circ}\text{C}</math>. In the case of the large batteries, has decreased by half of the temperature increase observed during the test and remains below that value. The cell and battery must be observed for a further six hours for the test to be concluded.</p>
技术要求 Test requirement	<p>外壳温度不超过<math>170^{\circ}\text{C}</math>，不解体、不破裂、不着火。</p> <p>External temperature does not exceed <math>170^{\circ}\text{C}</math>. No disassembly, no rupture and no fire.</p>
检测结果 Test results	<p>外壳温度不超过<math>170^{\circ}\text{C}</math>，不解体、不破裂、不着火，具体数据详见附表5</p> <p>External temperature does not exceed <math>170^{\circ}\text{C}</math>. No disassembly, no rupture and no fire. Test data is shown in Annex 5.</p>
结论 Pass/Fail Conclusion	P

中认英泰检测技术有限公司  
CQC Intime Testing Technology Co.,Ltd  
检测报告  
Test Report

检测结果  
Test results

条款 Clause	<b>38.3.4.6 撞击/挤压</b> <b>38.3.4.6 Impact/Crush</b>
测试步骤 Test Procedure	<p>□撞击（适用于直径不小于18.0毫米的圆柱形电池） Impact(applicable to cylindrical cells not less than 18.0 mm in diameter) 将样品电池置于平板上，将一直径为15.8mm±0.1mm的不锈钢棒横放在样品中心，一块9.1Kg±0.1Kg的重锤从61 ± 2.5 cm高度落到试样上。圆柱形电池受撞击时，其长轴应平行于平板并且垂直于放在受检电池中心的直径为 15.8mm的棒。每一试样只经受一次撞击，电池必须再观察6h结束试验。 The sample cell or component cell is to be placed on a flat smooth surface. A 15.8 mm ± 0.1mm diameter stainless steel bar is to be placed across the centre of the sample. A 9.1 kg ± 0.1 kg mass is to be dropped from a height of 61 ± 2.5 cm on to the sample. The test sample is to be impacted with its longitudinal axis parallel to the flat surface and perpendicular to the longitudinal axis of the 15.8 mm ± 0.1mm diameter curved surface lying across the centre of the test sample. Each sample is to be subjected to only a single impact. The battery must be observed for a further six hours for the test to be concluded.</p> <p>■挤压(适用于棱柱形、袋装、硬币/纽扣电池和直径小于18.0毫米的圆柱形电池) Crush (applicable to prismatic, pouch, coin/button cells and cylindrical cells less than 18.0 mm in diameter) 将试样电池放在两个平面之间挤压，挤压力度逐渐增大，速度大约为1.5cm/s.挤压持续进行，直到出现以下三种情况之一：(a)施加的力量达到13kN±0.78kN;(b)电池的电压下降至少100mV;(c)电池变形达到原始厚度的50%或以上。棱柱形和袋装电池应从最宽的一面施压。硬币/纽扣电池应从平坦表面施压。圆柱形电池应从与纵轴垂直的方向施压。每个试样电池只做一次挤压试验，电池必须再观察6h结束试验。 A cell or component cell is to be crushed between two flat surfaces. The crushing is to be gradual with a speed of approximately 1.5 cm/s at the first point of contact. The crushing is to be continued until the first of the three options below is reached. (a) The applied force reaches 13 kN ± 0.78 kN; (b) The voltage of the cell drops by at least 100 mV; or (c) The cell is deformed by 50% or more of its original thickness. A prismatic or pouch cell shall be crushed by applying the force to the widest side. A button/coin cell shall be crushed by applying the force on its flat surfaces. For cylindrical cells, the crush force shall be applied perpendicular to the longitudinal axis. Each test cell or component cell is to be subjected to one crush only. The battery must be observed for a further six hours for the test to be concluded.</p>
技术要求 Test requirement	外壳温度不超过170°C，不解体、不破裂、不着火。 External temperature does not exceed 170°C.. No disassembly, no rupture and no fire.
检测结果 Test results	外壳温度不超过170°C，不解体、不破裂、不着火，具体数据详见附表6 External temperature does not exceed 170°C. No disassembly, no rupture and no fire. Test data is shown in Annex 6.
结论 Pass/Fail Conclusion	P

中认英泰检测技术有限公司  
CQC Intime Testing Technology Co.,Ltd  
检测报告  
Test Report

检测结果  
Test results

条款 Clause	<b>38.3.4.7 过度充电</b> <b>38.3.4.7 Overcharge</b>
测试步骤 Test Procedure	<p>充电电流必须是制造商推荐的最大持续充电电流的两倍。试验的最小电压应为如下： （a）当制造商推荐的充电电压不超过18 V时，试验的最小电压应为2倍于电池的最大充电电压或为22 V二者中较小者；（b）当制造商推荐的充电电压超过18 V时，试验的最小电压应为最大充电电压的1.2倍。该试验应在环境温度下进行。进行试验的时间应为24 小时。在过充电结束后观察被检电池7天。</p> <p>The charge current shall be the twice the manufactures recommended maximum continuous charge current. The minimum voltage of the test shall be follows:(a)When the manufactures recommended charge voltage is not more than 18V, the minimum voltage of the test shall be the lesser of two times the maximum charge voltage of the battery or 22V.(b)When the manufactures recommended charge voltage is more than 18V, the minimum voltage of the test shall be 1.2 times the maximum charge voltage.Tests are to be conducted at ambient temperature. The duration of the test shall be 24 hours. The test sample shall be observed for a further 7 days.</p>
技术要求 Test requirement	不解体、不着火。 No disassembly, no fire.
检测结果 Test results	不解体、不着火,具体数据详见附表7 No disassembly, no fire. Test data is shown in Annex 7.
结论 Pass/Fail Conclusion	P



中认英泰检测技术有限公司  
CQC Intime Testing Technology Co.,Ltd  
检测报告  
Test Report

检测结果  
Test results

条款 Clause	<b>38.3.4.8 强制放电</b> <b>38.3.4.8 Forced discharge</b>
测试步骤 Test Procedure	<p>电池在环境温度下与12V 直流电源串联连接，以电池制造商规定的最大持续放电电流作为初始电流强制放电。</p> <p>将一个大小和功率合适的电阻负载与被检电池以及直流电源串联以获得规定的放电电流。每个电池强制放电的时间应等于其额定容量除以起始试验电流。在强制放电结束后观察被检电池7 天。</p> <p>Each cell shall be forced discharged at ambient temperature by connecting it in series with a 12V D.C. power supply at an initial current equal to the maximum discharge current specified by the manufacturer.</p> <p>The specified discharge current is to be obtained by connecting a resistive load of the appropriate size and rating in series with the test cell. Each cell shall be forced discharged for a time interval (in hours) equal to its rated capacity divided by the initial test current (in ampere). The test sample shall be observed for a further 7 days.</p>
技术要求 Test requirement	不解体、不着火。 No disassembly, no fire.
检测结果 Test results	不解体、不着火,具体数据详见附表8 No disassembly, no fire. Test data is shown in Annex 8.
结论 Pass/Fail Conclusion	P

# 中认英泰检测技术有限公司 CQC Intime Testing Technology Co.,Ltd 检测报告 Test Report

**附表1 高度模拟试验  
Annex 1. Altitude Simulation**

样品编号 Sample No.	试验前 Before test OCV <sub>1</sub> (V)	试验前 Before test M <sub>1</sub> (kg)	试验后 After test OCV <sub>2</sub> (V)	试验后 After test M <sub>2</sub> (kg)	OCV <sub>2</sub> / OCV <sub>1</sub> (%)	质量损失 Mass Loss (%)	备注 Remarks
B1	52.71	54.80	52.71	54.80	100.00%	0.000%	-
B2	52.69	55.03	52.69	55.03	100.00%	0.000%	-
B3	52.74	55.01	52.73	55.01	99.98%	0.000%	-
B4	52.72	54.93	52.72	54.93	100.00%	0.000%	-
以下空白 Blank below							

**中认英泰检测技术有限公司**  
**CQC Intime Testing Technology Co.,Ltd**  
**检测报告**  
**Test Report**

**附表2温度试验**  
**Annex 2. Thermal test**

样品编号 Sample No.	试验前 Before test OCV <sub>1</sub> (V)	试验前 Before test M <sub>1</sub> (kg)	试验后 After test OCV <sub>2</sub> (V)	试验后 After test M <sub>2</sub> (kg)	OCV <sub>2</sub> / OCV <sub>1</sub> (%)	质量损失 Mass Loss (%)	备注 Remarks
B1	52.71	54.80	52.62	54.76	99.83%	0.073%	-
B2	52.69	55.03	52.61	54.98	99.85%	0.091%	-
B3	52.73	55.01	52.62	54.97	99.79%	0.073%	-
B4	52.72	54.93	52.62	54.89	99.81%	0.073%	-
以下空白 Blank below							

**中认英泰检测技术有限公司**  
**CQC Intime Testing Technology Co.,Ltd**  
**检测报告**  
**Test Report**

**附表3振动试验**  
**Annex 3. Vibration**

样品编号 Sample No.	试验前 Before test OCV <sub>1</sub> (V)	试验前 Before test M <sub>1</sub> (kg)	试验后 After test OCV <sub>2</sub> (V)	试验后 After test M <sub>2</sub> (kg)	OCV <sub>2</sub> / OCV <sub>1</sub> (%)	质量损失 Mass Loss (%)	备注 Remarks
B1	52.62	54.76	52.61	54.76	99.98%	0.000%	-
B2	52.61	54.98	52.61	54.97	100.00%	0.018%	-
B3	52.62	54.97	52.62	54.97	100.00%	0.000%	-
B4	52.62	54.89	52.61	54.88	99.98%	0.018%	-
以下空白 Blank below							

中认英泰检测技术有限公司  
CQC Intime Testing Technology Co.,Ltd  
检测报告  
Test Report

附表4冲击试验  
Annex 4.Shock

样品编号 Sample No.	试验前 Before test OCV <sub>1</sub> (V)	试验前 Before test M <sub>1</sub> (kg)	试验后 After test OCV <sub>2</sub> (V)	试验后 After test M <sub>2</sub> (kg)	OCV <sub>2</sub> / OCV <sub>1</sub> (%)	质量损失 Mass Loss (%)	备注 Remarks
B1	52.61	54.76	52.61	54.76	100.00%	0.000%	-
B2	52.61	54.97	52.61	54.97	100.00%	0.000%	-
B3	52.62	54.97	52.62	54.97	100.00%	0.000%	-
B4	52.61	54.88	52.61	54.88	100.00%	0.000%	-
以下空白 Blank below							

中认英泰检测技术有限公司  
CQC Intime Testing Technology Co.,Ltd  
检测报告  
Test Report

附表5外部短路试验  
Annex 5. External short circuit

样品编号 Sample No.	试验前电压 Voltage before test (V)	初始温度 Initial Temperature (℃)	最高温度 Max Temperature (℃)	备注 Remarks
B1	52.61	56.3	56.3	-
B2	52.61	56.2	56.3	-
B3	52.62	56.2	56.3	-
B4	52.61	56.3	56.4	-
以下空白 Blank below				

中认英泰检测技术有限公司  
CQC Intime Testing Technology Co.,Ltd  
检测报告  
Test Report

附表6 撞击/挤压试验  
Annex 6. Impact/Crush

样品编号 Sample No.	试验前电压 Voltage before test (V)	初始温度 Initial Temperature (°C)	最高温度 Max Temperature (°C)	备注 Remarks
C1	3.311	23.2	23.3	-
C2	3.308	23.3	23.4	-
C3	3.310	23.1	23.3	-
C4	3.308	23.2	23.4	-
C5	3.308	23.2	23.3	-
C6	3.306	23.4	23.4	-
C7	3.310	23.3	23.4	-
C8	3.309	23.1	23.2	-
C9	3.310	23.2	23.3	-
C10	3.308	23.2	23.4	-
以下空白 Blank below				



中认英泰检测技术有限公司  
CQC Intime Testing Technology Co.,Ltd  
检测报告  
Test Report

附表7过充电试验  
Annex 7.Overcharge

样品编号 Sample No.	试验前电压 Voltage before test (V)	初始温度 Initial Temperature (°C)	最高温度 Max Temperature (°C)	备注 Remarks
B5	52.73	23.2	23.3	-
B6	52.68	23.1	23.2	-
B7	52.71	23.1	23.2	-
B8	52.69	23.1	23.2	-
以下空白 Blank below				

中认英泰检测技术有限公司  
CQC Intime Testing Technology Co.,Ltd  
检测报告  
Test Report

附表8强制放电试验  
Annex 8. Forced discharge

样品编号 Sample No.	试验前电压 Voltage before test (V)	初始温度 Initial Temperature (°C)	最高温度 Max Temperature (°C)	备注 Remarks
C11	2.759	23.3	43.2	-
C12	2.752	23.1	41.8	-
C13	2.768	23.4	44.0	-
C14	2.758	23.4	42.6	-
C15	2.774	23.2	45.0	-
C16	2.765	23.5	43.9	-
C17	2.759	23.1	44.3	-
C18	2.773	23.1	41.9	-
C19	2.764	23.3	45.0	-
C20	2.759	23.0	44.3	-
C21	2.771	23.4	43.6	-
C22	2.780	23.5	42.7	-
C23	2.758	23.3	44.6	-
C24	2.766	23.2	44.0	-
C25	2.765	23.4	43.5	-
C26	2.783	23.4	41.7	-
C27	2.776	23.3	42.3	-
C28	2.769	23.2	41.8	-
C29	2.772	23.1	43.2	-
C30	2.758	23.5	42.6	-
以下空白 Blank below				

——报告结束 End——

# 声明

## Statement

1. 未经本机构书面批准不得部分复制本报告，除非全部复制。

Don't copies the report partly, if you don't obtain the laboratory allow you to do that, unless you copy the whole report.

2. 检验结果仅对所检样品有效。

The test report is only valid to the sample which has been tested

3. 若对检测结果有异议，请在收到报告后十日内向本机构书面提出。

If you have any objection to the test result, please submit it to the laboratory in writing within 10 days after receiving the report.

4. 受检样品务必在收到检测报告三十日内领取，逾期本机构将作为废弃物自行处理。

The sample must be collected within 30 days after receiving the test report. The overdue sample will be disposed of as waste by the laboratory itself.

5. 此报告仅作为委托方参考，不作为诉讼、仲裁等依据。

This report only as a reference for client, can't be considered as a basis for litigation, arbitration and so on.

检测机构：中认英泰检测技术有限公司

Test Lab.: CQC Intime Testing Technology Co.,Ltd.

总部地址：苏州市吴中经济开发区吴中大道1368号东太湖科技金融城

Headquarter address: East Taihu Hi-Tech & Finance Town, No.1368, Wuzhong Road, Wuzhong Economic Development Zone, Suzhou, China

邮政编码：215104

电 话：0512-66303621

传 真：0512-66303625

E-mail: cqc\_jszlb@126.com

苏州胥口实验室地址：胥口镇曹丰路236号

慈溪办事处地址：浙江省慈溪市水南路19号中央大厦北楼10层1020室

电话：0574-63895313

深圳办事处地址：深圳市福田区新洲十一街139号中央西谷大厦13A层

电话：0755-82889188-8118

广州办事处地址：广州市海珠区赤岗西路266号小聪科技园9楼

电话/传真：020-84147422